

COMMRICH BROADBAND
ADSL MODEM DRIVER INSTALLATION
(Mac OS)

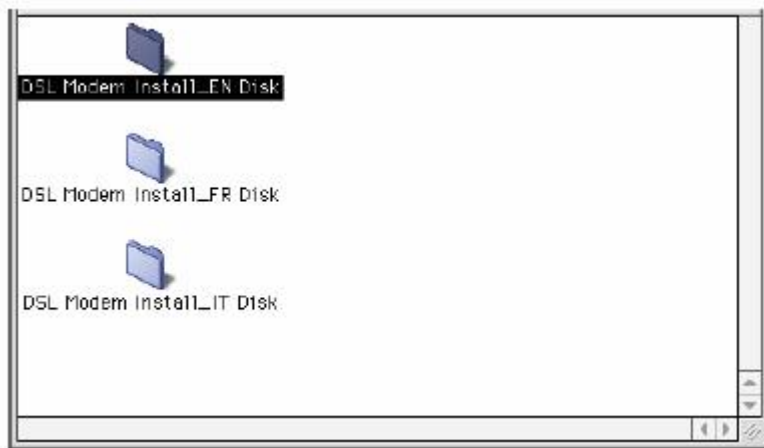
This document is for users of CommRich ADSL modem hardware.

ADSL MODEM DRIVER INSTALLATION

Mac OS

The following installation walkthrough and screenshots are using a Mac OS 9, although, other Macs will be extremely similar to this.

- Start up your PC with the modem connected.
- Insert the CD-ROM that comes with the EZ Connect ADSL USB Modem into your CD drive.
- Select the language version you want to install, and double-click to open the selected folder.



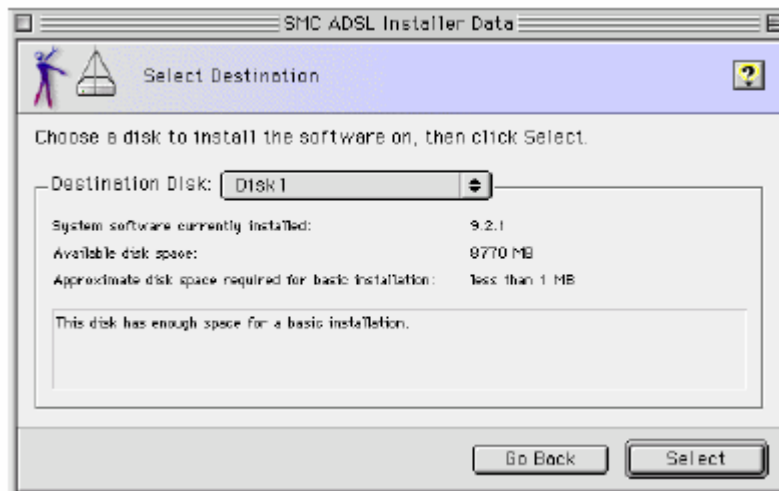
Double-click Installer to start the driver installation.



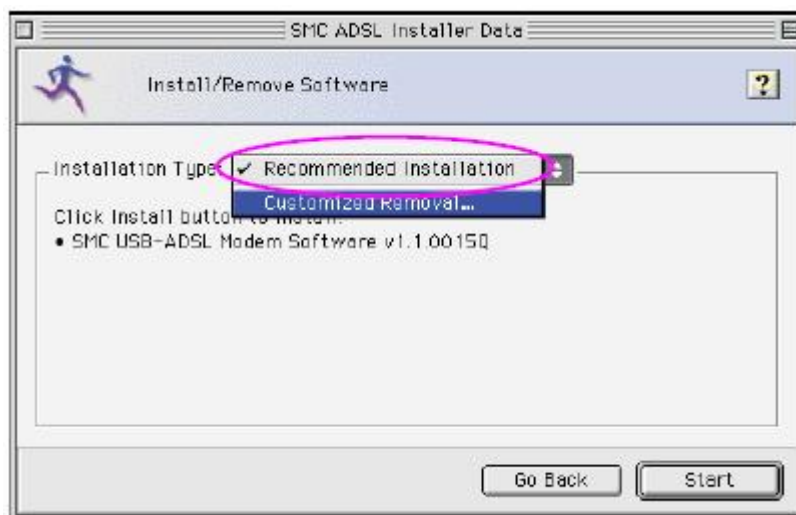
The welcome screen will appear as shown below. click Continue.



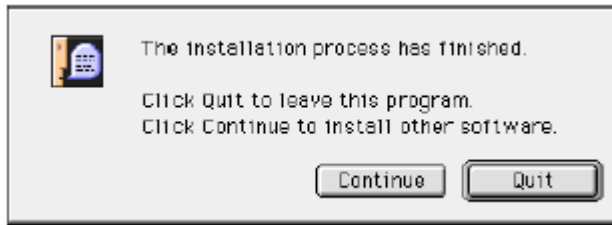
Select the location to install the software, and click Select.



Click Start to continue.



Click Quit to finish driver installation.



Uninstalling modem drivers & software

Ensure the modem is plugged into the USB port.

From the Menu, go to programs and click the **Uninstall** icon. This will start the uninstall process.

You will be asked to check that the modem is plugged in. You should only unplug the modem from the USB port when prompted to do so.

You will then have to reboot your PC to complete the uninstall process.