

COMMRICH BROADBAND

ADSL MODEM CONFIGURATION

This document is for users of CommRich ADSL modem hardware.

ADSL MODEM CONFIGURATION

The EZ Connect ADSL USB Modem control panel program provides a quick and easy way to configure and check the performance of the modem and ADSL connection. When open, the monitor window is updated every two seconds.

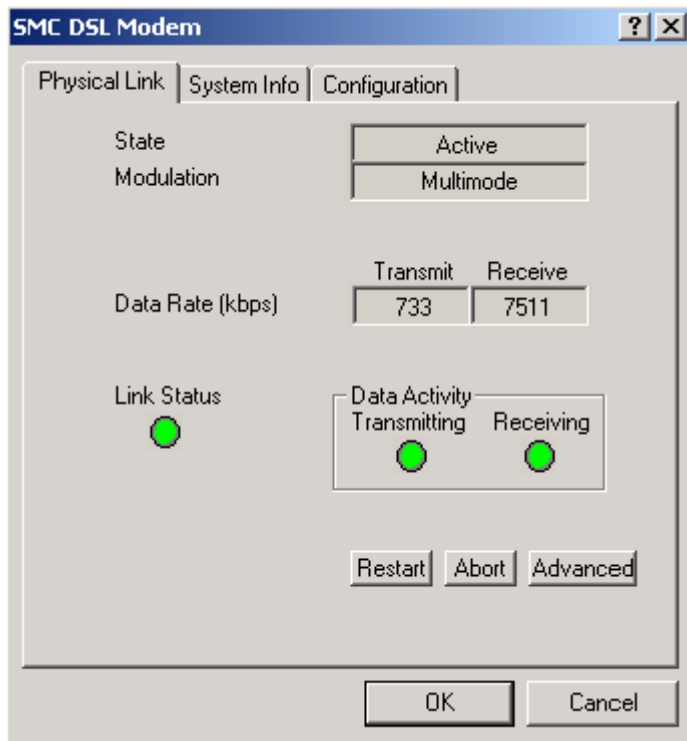
Click Start -> Settings -> Control Panel.

From the Control Panel window, double-click the SMC DSL Modem icon to view the configuration settings.



Physical Link

The Physical Link screen allows you to review the current state of the EZ Connect ADSL USB Modem and connection. When the green indicator is on, in the Link Status field, it indicates that a connection has been made. This indicator blinks while a connection is being established. The Transmitting and Receiving data activity are shown separately by individual flashing green indicators.



Click Restart for reconnection, Abort for disconnection, and Advanced to view detailed information.

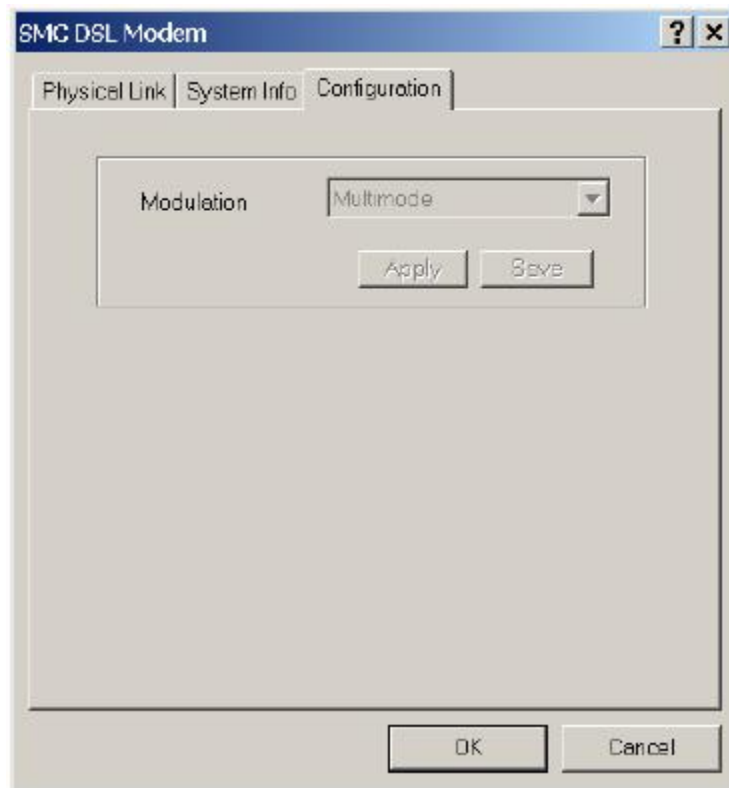
System information

The System Information screen displays the release number of the EZ Connect ADSL USB Modem driver, the firmware release number, and the control panel version that you are currently using.



Configuration

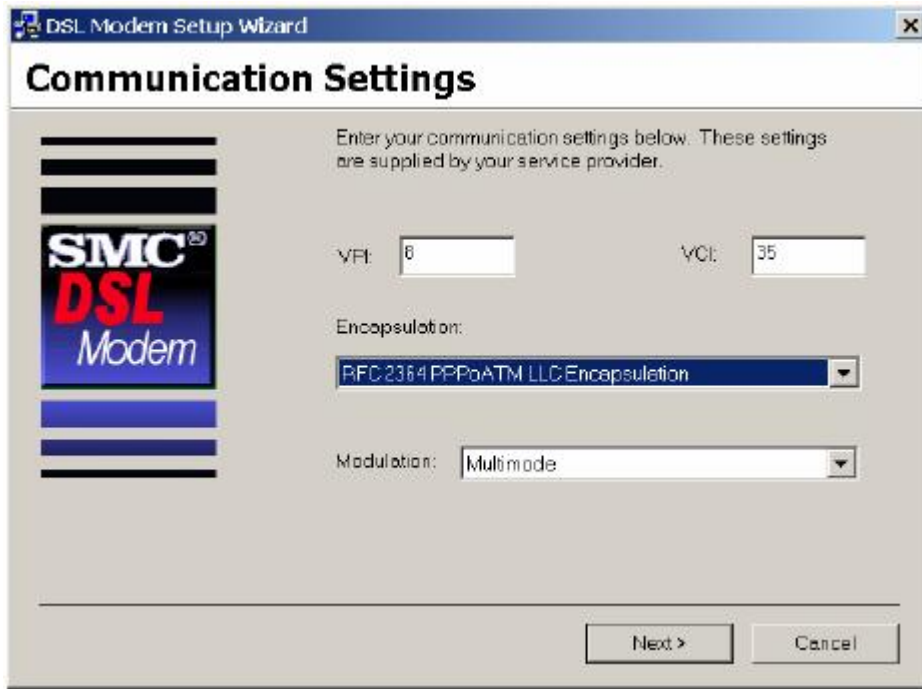
The Configuration screen displays the modulation settings applicable to your driver.



If you need to configure further settings, launch the Communication Settings window by clicking Start -> Programs -> SMC DSL Modem -> Configure.



The Communication Settings window allows you to select the Encapsulation type of PPPoATM or PPPoE connection, and the modulation settings.



Encapsulation (Default: RFC 2364 PPPoATM LLC Encapsulation)



Modulation (Default: Multimode)

